

Welcome to  
Year 6!



CHURCH OF ENGLAND  
ACADEMY



- Year 6 team
- Timetable
- Routines (PE, homework, equipment etc)
- Expectations
- Year 6 Curriculum
- Year 6 highlights
- How you can help
- Communication
- Key dates
- Rock UK





# The Year 6 Team

# Meet the Year 6 Team

Adults working within the year group:

Class 10 - Mrs Finn

Class 11 - Mrs Bain (Mon-Thurs)  
Mr Cuthbert (Fri)

Class 12 - Miss Gordge

Mrs Kotecha, Mrs Lown, Mrs Halliday,  
Mrs Sudbury and Mrs Agarwal.



Mr Briant - PE

Mrs O'Driscoll - Creative Curriculum

Mrs Simmonds - Music



# Timetable

Year 6	8:45-8:55	8:55-9:15	9:20-10:10	10:10-10:30	10:30-10:45	10:45-11:45/12:00		12:00-12:45	12:45-1:45	2:00-3:00		From 3:00		
Monday	REGISTRATION	GUIDED READING	English	Whole school collective worship	B R E A K	10:45-12:00 Maths		English	Lunch	Art		HOMETIME  REFLECTION		
Tuesday			8:55-9:15	9:15-10:00	10:00-10:45	10:45-11:00	11:00-11:45	11:45-12:45		1:00-2:00	2:00-3:00			
			Class collective worship	Lesson 1 (music, creativity, PE)	Lesson 2 (music, creativity, PE)	B R E A K	Lesson 3 (music, creativity, PE)	Lunch		English	Maths			
Year 6 teachers (PPA from 12:45)														
Wednesday			REGISTRATION	GUIDED READING	9:10-9:30	9:30-10:30	B R E A K	10:45-12:00 Maths		12:00-12:45	12:45-1:45		1:50-3:15	
	Yr group collective worship	Maths			French/PSHE/ Computing			Lunch	French/PSHE/ Computing 1:50-2:30 2:35-3:15					
Thursday	English	Whole school collective worship			B R E A K	English		11:45-12:45	12:45-1:45	2:00-3:00				
								RE	Lunch	Science				
Friday			Humanities	Whole school collective worship	B R E A K	10:45-11:15	11:15-12:15	12:15-12:45	12:45-1:45					
						Golden Time	Maths	Class time	Lunch	Games				



# Routines and Expectations

# Routines and Expectations

PE kits (Tues/Fri)



Homework (Mon)



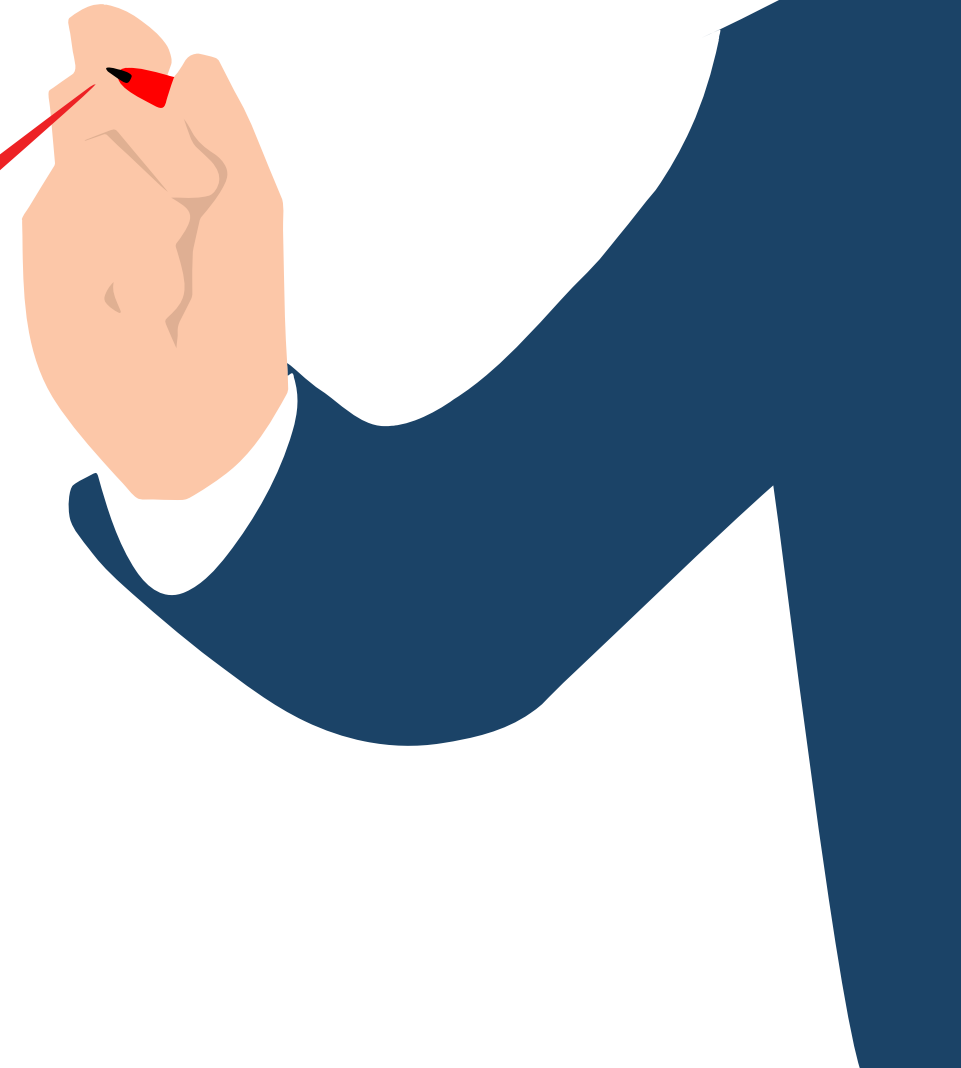
School uniform



Equipment



Behaviour



# *School uniform should include:*

<b>Jumper</b>	<b>Navy blue V neck with academy logo</b>
<b>Shirt</b>	<b>White, long or short sleeve (not a polo shirt)</b>
<b>Clip on Tie</b>	<b>Red, navy and gold striped</b>
<b>Skirt</b>	<b>Navy, red and gold check</b>
<b>Trousers/Shorts</b>	<b>Grey, tailored school trousers</b>
<b>Socks</b>	<b>White with a skirt or grey with trousers</b>
<b>Tights</b>	<b>Navy blue</b>
<b>Shoes</b>	<b>Black (not trainers)</b>



I  
have come that they might  
have life  
and have it to the  
FULL  
John 10:10

Bringing **joy**...  
**inspiring success!**



At CSPA, our core values are:



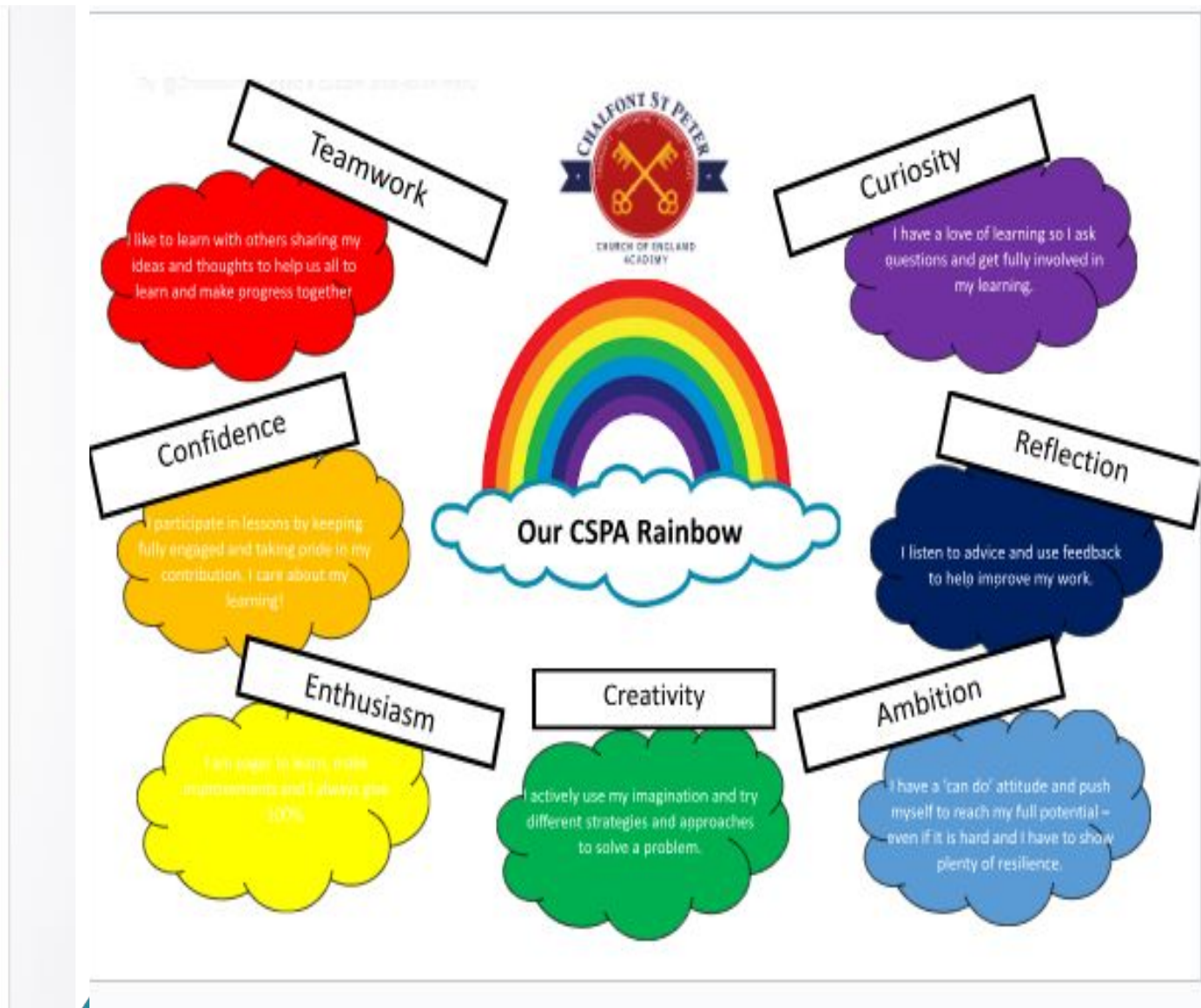
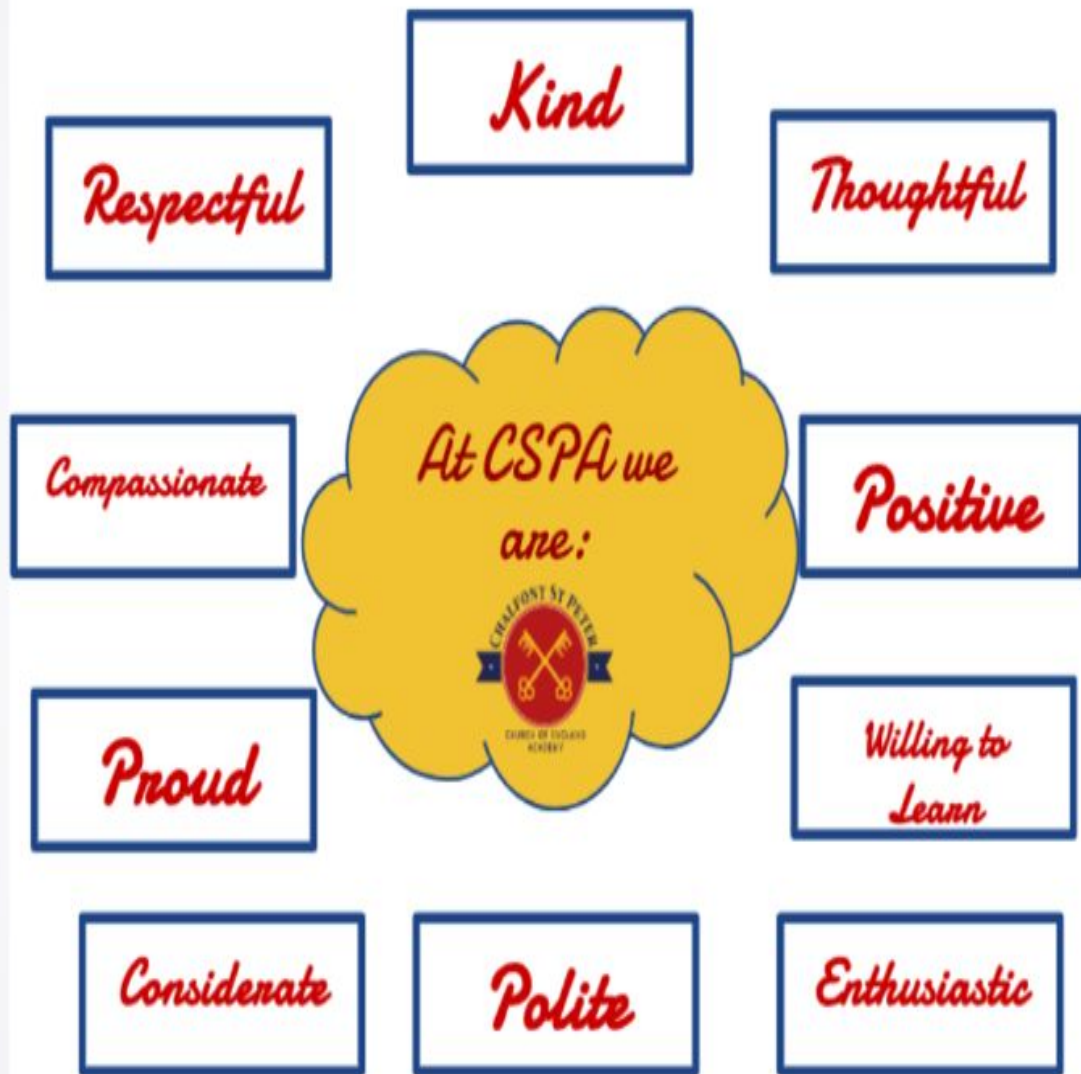
# Golden Rule

The one rule for all of us in school is:

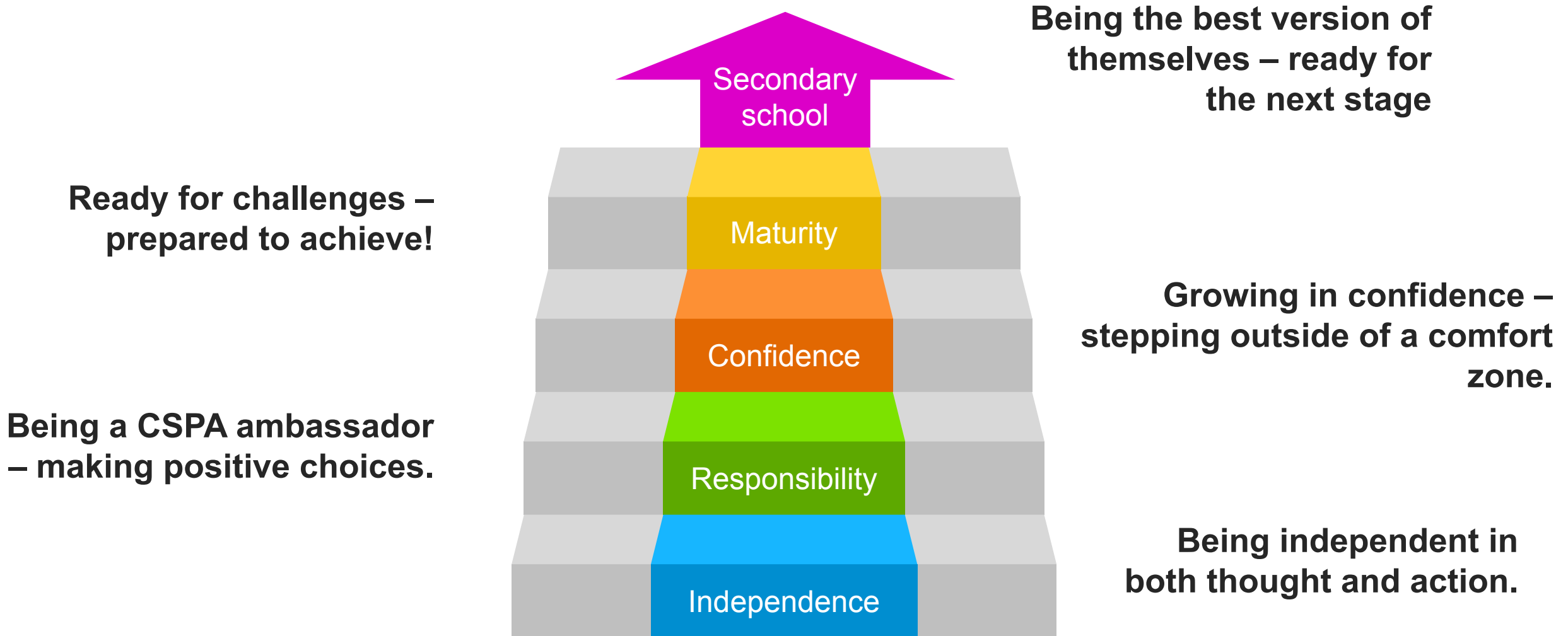
*Everyone will act with gentleness  
and respect to others at all times.*

*We will keep ourselves  
and others safe.*





# Year 6 Expectations





# Year 6 Curriculum

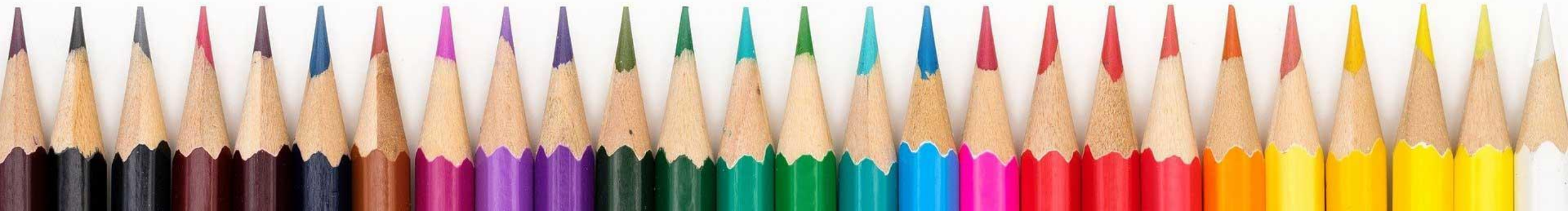
# Year 6 Curriculum (autumn)

## English

**Spelling, Punctuation and Grammar (SPAG)** – statutory spelling list, higher level punctuation, vocabulary extension, word classes, sentence structure, standard English.

**Reading** – Kensuke's Kingdom (authorial voice, shared/independent writing, cross-curricular, comprehension skills - VIPERS).

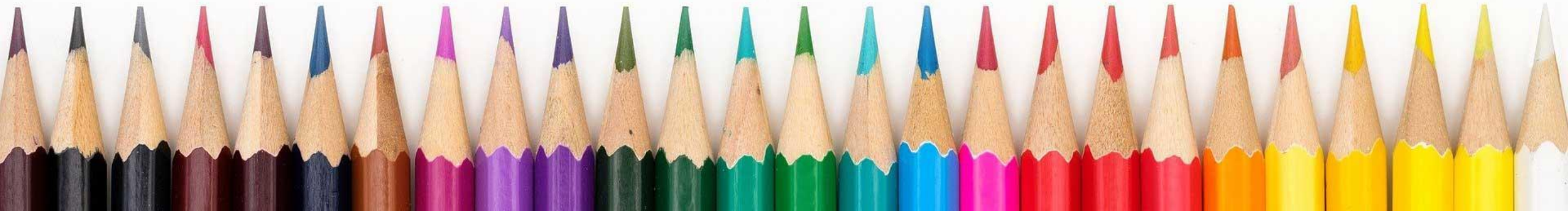
**Writing** – creative and informative writing inspired by films, texts, pictures, people, historical events, experiences, current affairs. Encouraging the children to enjoy their writing – learning to draft, edit and take pride in their writing while considering their readers.



# Year 6 Curriculum (autumn)

## Maths

	Week 1	Week 2	Week 3	Week 4	Week 5	Week 6	Week 7	Week 8	Week 9	Week 10	Week 11	Week 12	Week 13	Week 14
Autumn	Number: Place Value and Revision		Number: 4 operation written methods		Number: Decimals		Number: Fractions, Decimals and Percentages			Geometry: Coordinates, Translation and Reflection		Measurement: Perimeter and Area		
Spring	Assessment (A), review (R) and consolidation (C)			Geometry: Revision		Measurement: Revision		Number: Ratio, Scale Factors and Algebra		Statistics		Assessment (A), review (R) and consolidation (C)		
Summer	Assessment (A), review (R) and consolidation (C)			Using and Applying: Projects and Investigations								Assessment (A), review (R) and consolidation (C)		



# Year 6 Curriculum (Autumn)

**RE:** What would Jesus do? Christmas Concept

**Science:** Animal Classification (Linnaean System)

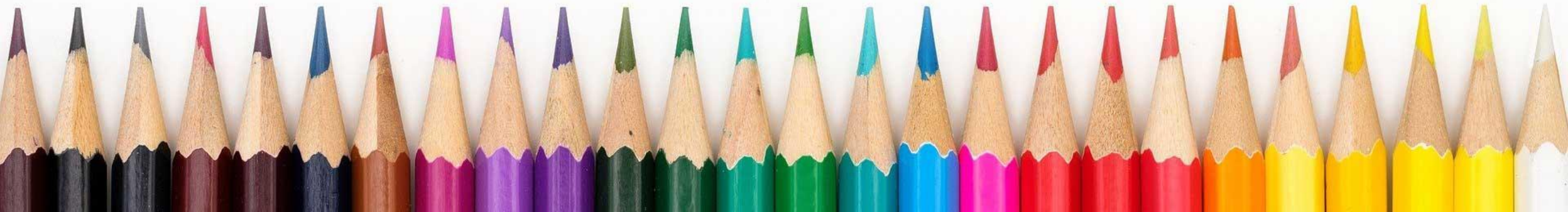
**Computing:** E-Safety, using and applying presentation skills

**Humanities:** Victorians, Globalisation,

**PE and Games:** Fitness/circuits, gymnastics, football, netball, rugby,

**PSHE:** Think Positive, Safety First, Anti-Bullying Week, Wellbeing Day

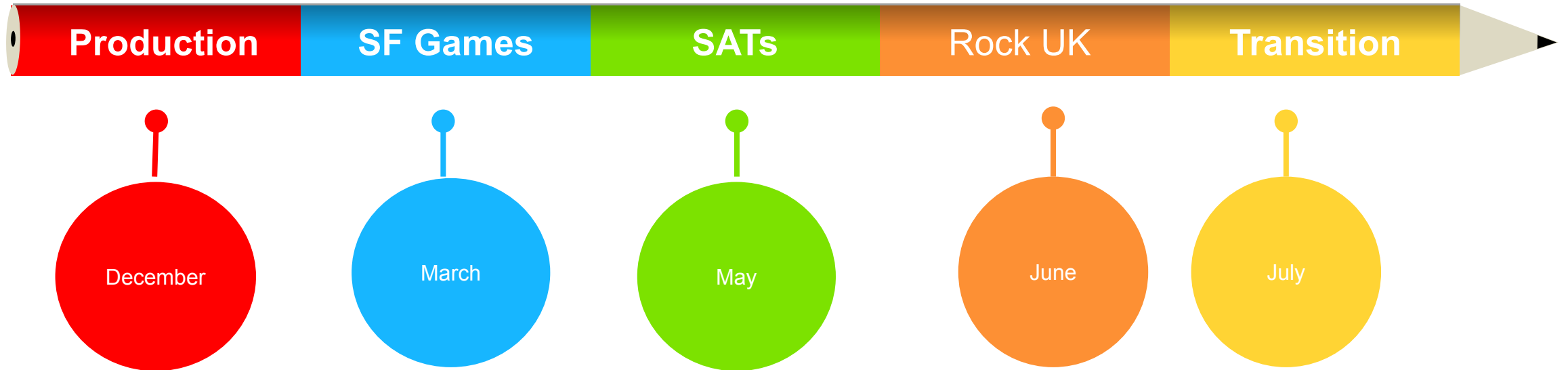
**Art and Design:** The Bigger Picture, In Stitches





# Year 6 Highlights

# Year 6 Highlights



Alongside whole school events such as Arts Week, special WOW days, extra curricular clubs and activities and leadership roles.





SATs

Standard Assessment Tests (SATs) are designed to test children's attainment at the end of Key Stage 2.

They test the children on their learning from Year 3-6.

All the tests take place during the week of the 11<sup>th</sup> May 2026.

The SATs papers consist of:

- Spelling, punctuation and grammar (paper 1: Grammar/ Punctuation/ Spelling) – Monday 11<sup>th</sup> May
- Spelling, punctuation and grammar (paper 2: Spelling test) – Monday 11<sup>th</sup> May
- Reading – Tuesday 12<sup>th</sup> May
- Maths (paper 1: Arithmetic) – Wednesday 13<sup>th</sup> May
- Maths (paper 2: Reasoning) – Wednesday 13<sup>th</sup> May
- Maths (paper 3: Reasoning) – Thursday 14<sup>th</sup> May

Writing is assessed using evidence collected throughout Year 6. There is no Year 6 SATs writing test.



How you can help  
at home?

# How can you help at home?

- Shared reading
- Monitoring reading records
- Supporting homework
- Supporting school events
- Supporting the PTA
- Reinforcing our school values
- Helping your child to prepare for secondary school
- Keep informed – school newsletter





Communication



First point of contact should always be your child's class teacher.



Year Leader



Deputy Headteacher



Headteacher

# Communication



**Other reminders  
and key dates**

# Other reminders...

- Smart school uniform – no earrings, nail varnish and hair tied back.
- Punctuality
- Absence
- Safety around the school site

## Key dates:

PTA Bingo Night (Lower School) 26.9.25

PTA Bingo Night (Upper School) 17.10.25

Pupil portraits 6.10.25

Arts week w/c 24.10.25





# THANK YOU!

Follow us on @cspa\_head on Facebook and Instagram for photographs and updates about what we are getting up to in Year 6!



# The Year 6 Residential Trip

8<sup>th</sup> – 12<sup>th</sup>

June 2026



TRANSFORMING  
YOUNG LIVES  
SINCE 1922





# Outstanding Location and Facilities

A beautifully secluded site (25 minutes from Cardiff).

- A 104 bed en-suite accommodation
- 8.5m high ropes course
- 18m high indoor climbing centre
- All weather sports pitches
- 3 large function and meeting rooms
- Separate cafe
- Large lake and plenty of outdoor space

# Why did we choose the Summit Centre?

“At the Summit Centre we focus on making a difference to every child. Rather than numbers through the door, our goal is to provide quality residential activity stays and memories that last a lifetime.

We invest heavily in our instructors so that they can invest in your children too. Our instructors are with us all year round so they drive our values through each individual session and genuinely care about each child.

# SUMMIT CENTRE



The centre will be ours for the duration of the stay with CSPA children and staff occupying the whole accommodation and all of the facilities.



Rooms are fully secure with adults rooms in each section of the accommodation.





Accommodation is usually organised in groups of 4. Bedding is included.



As always, the trip will be carefully planned and staffed.

# Activities

20 instructed activities - offering differences to Osmington Bay (Year 4 trip):

- Archery
- Indoor climbing
- Canoeing/kayaking
- Crate stacking
- Onsite caving
- Ariel adventure

In addition – Waterfall adventure (offsite experience)



WHO  
DO YOU  
TRUST















# Catering

All meals are fully catered for including any packed lunches.

The children will have a cooked breakfast, lunch and 2-course dinner.

Meals are shared in a canteen style set up so children can choose what they would like.

All dietary requirements will be met.







Please contact Mrs Alburg should you wish to discuss financial implications of the trip. All communication will be strictly confidential.

# BURSARY FUND

Bursary places can be offered to any child you may not be able to join the trip due to financial hardship.

Individuals who are eligible for free school meals will have their trip mostly funded.

The bursary fund is for families who may not be eligible for pupil premium funding but may still find it a challenge to pay for the trip

A proportion of the cost of the trip can be funded (not including travel costs).

# Safety

The Summit Centre is licensed by the Adventure Activities Licensing Authority (AALA) and is regularly inspected as part of our internal health and safety audit programme. The instructors are all fully trained and all are of course DBS checked.

The Summit Centre is also Learning Outside the Classroom (LOtC) accredited.

# Trip Details

Dates: Monday 8<sup>th</sup> June – Friday 12<sup>th</sup> June 2026

Approximate timings (TBC): Leaving in the morning on the Monday (approximately 9:30-10:00 am) and returning to school mid-afternoon (approximately 2pm) on the Friday.

Travel: Motts Coaches

Cost: £470.00 (deposit due 24.10.25 – non-refundable once the trip is confirmed).

Further details and a payment schedule will be outlined in an email to be sent home this week.

Regular updates and correspondence via letters and on the school website will follow and a further meeting will be hosted just before we go on the trip.

# Trip Details

An email will be sent to you with further details with an embedded Google form in order for you to register your interest or decline the opportunity for your child to join the trip.

I look forward to hearing from you and providing this most wonderful opportunity for your child.

Please don't hesitate to get in touch if you have any questions.